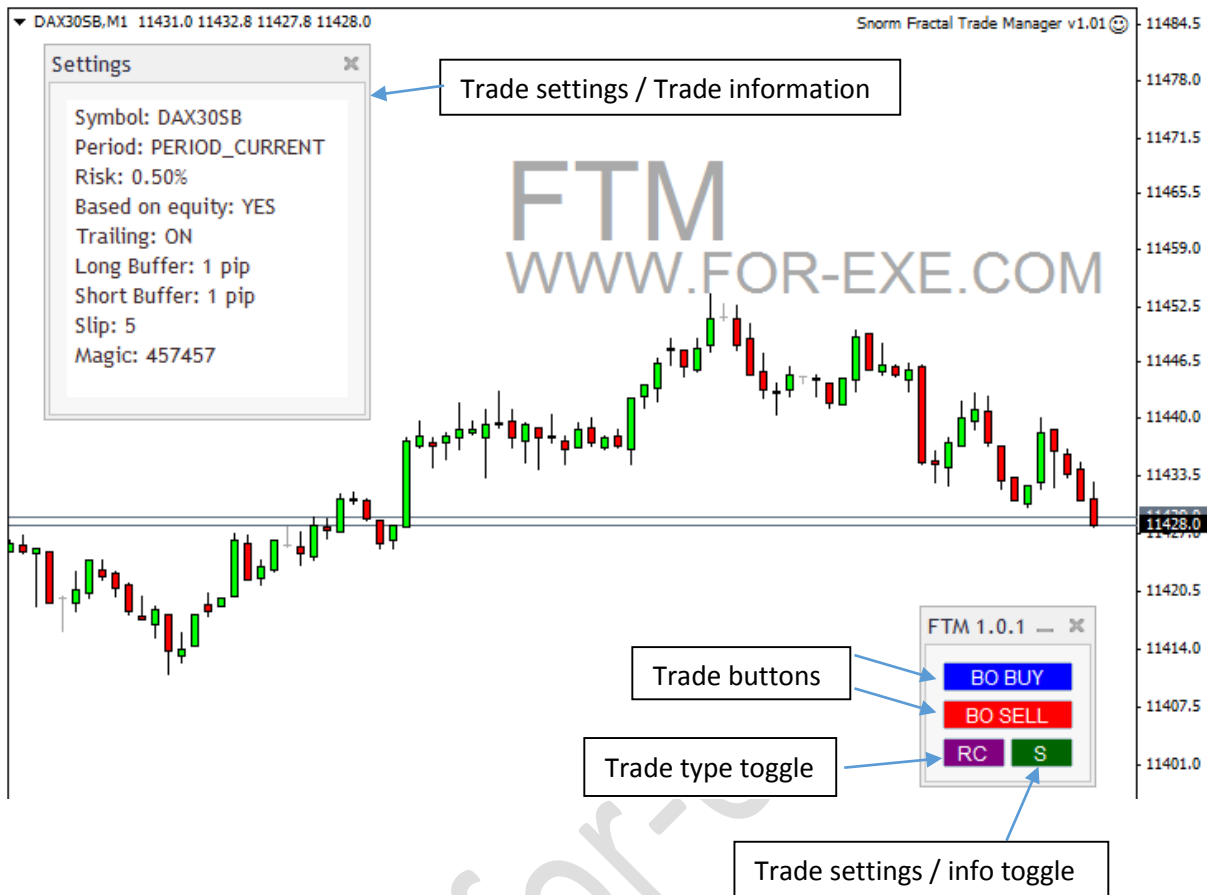


SNORM FRACTAL TRADE MANAGER



This is a very useful trade management EA; particular for traders who trade the lower timeframes and trail stop losses on fractal levels.

Using buttons, it provides a quick way of placing two types of pending orders: reversal ('Fruits') and fractal breaks (AIMS Break). The EA can calculate lot size based on percentage risk or you can select a fixed lot size.

Stop losses are automatically placed using opposite fractal levels or, in the case of reversal trades the recent swing high/low. As new fractal levels are formed during open trades, the EA moves the stop levels but keeps them hidden from the broker. The EA will close the trade only when price closes the other side of the stop level (not when price touches the stop level) so as to avoid being 'stopped out' when price spikes.

Special thanks to Julius for his masterful coding skills.

Continued ...

Trading Settings		
Field	Default	Function
LotSize	0.1	Fixed lot size if not auto-calculating on risk percent
RiskPercent	0.5	Set to zero if trading fixed lot size, as defined above
PosRiskonACEquity	true	Lot size calculated on the available equity in account or, if false, on account balance (i.e. not factoring for open trades)
TrailFractals	true	Trail stop loss levels to most recent fractals
ConfirmEntries	false	Prompt before placing a pending order trade
LongBufferPips	1	Pip buffer above level for long trades
ShortBufferPips	1	Pip buffer below level for short trades
Slip	5	Maximum pip slippage when opening trades
TradingTimeframe	current	Restricts trade management to a specified timeframe, if other than current required
MagicNumber	457457	The unique identifier that tells the EA which trade to manage. By setting this to zero, the EA will trail fractals on trades opened manually.

Display Settings		
Panel_Corner	CORNER_RIGHT_LOWER	Which corner of the chart to display the button panel
SL_Title	"Stop Loss"	The text displayed with the stop loss level
Long_Title	"Long Entry"	The text displayed with the long entry level
EN_Short_Title	"Short Entry"	The text displayed with the short entry level
S_Window	1	The sub-window in which the display panel is placed.
Panel_LeftRightPos	20	Horizontal pixel positioning of the panel
Panel_UpDownPos	20	Vertical pixel positioning of the panel
Change_Buttons_OnInit	false	Reset buttons to default when initialising chart, e.g. switching timeframes
Button_Font	Arial	Font of button text
Button_Font_Size	9	Font size of button text
Button_Height	18	Button size - height
Button_Width	80	Button size - width
BO_Toggle_Name	"BO"	Text displayed on the trade-type 'toggle' button
RC_Toggle_Name	"RC"	Text displayed on the trade-type 'toggle' button
BO_Buy_Name	"BO BUY"	Text displayed on the breakout long trade button
BO_Sell_Name	"BO SELL"	Text displayed on the breakout short trade button
RC_Buy_Name	"RS BUY"	Text displayed on the reversal long trade button
RC_Sell_Name	"RS SELL"	Text displayed on the reversal short trade button